



## Installation and Operation Manual

**IM 1005-6**

Group: **Controls**

Part Number: **IM 1005**

Date: **June 2023**

### **MicroTech® Unit Controller Remote User Interface**

### **Commercial Packaged Rooftops, Applied Rooftop, and Self-Contained Systems**

**Models: DPH, DPS, DPSA/DFSA, MPS, RAH, RCE, RCS, RDE, RDS, RDT,  
RFS, RPE, RPS, SWP and SWT**

### **Air and Water-Cooled Chillers**

**Models: AWS/AWV, AGZ-D/AGZ-E, and WME-B**



# Table of Contents

|  |          |  |           |
|--|----------|--|-----------|
| <b>Introduction</b> .....              | <b>3</b> | <b>Operator's Guide</b> .....                    | <b>9</b>  |
| General Information .....              | 3        | Using the Remote User Interface .....            | 9         |
| Product Information .....              | 3        | Hardware Features .....                          | 9         |
| Features .....                         | 3        | Keypad/Display Features .....                    | 9         |
| Hazardous Information Messages .....   | 3        | Alarms .....                                     | 10        |
| Reference Documents .....              | 3        | Passwords .....                                  | 10        |
| Component Data .....                   | 4        | Configuration .....                              | 10        |
| General .....                          | 4        | Customize User Preferences .....                 | 10        |
| Power .....                            | 4        | Synchronize with MicroTech Unit Controller ..... | 11        |
| Display .....                          | 4        | Firmware Upgrade Procedure .....                 | 12        |
| Environmental Conditions .....         | 4        | <b>Troubleshooting</b> .....                     | <b>13</b> |
| <b>Installation</b> .....              | <b>5</b> | Frequently Asked Questions .....                 | 13        |
| Pre-Installation .....                 | 5        | Helpful Tips .....                               | 13        |
| Location Considerations .....          | 5        | <b>Revision History</b> .....                    | <b>14</b> |
| Mounting Surfaces .....                | 5        |  |           |
| Parts .....                            | 5        |  |           |
| Installation .....                     | 5        |  |           |
| Wiring the Remote User Interface ..... | 7        |  |           |
| Daisy-Chain Connection .....           | 7        |  |           |
| Direct Connection .....                | 8        |  |           |

©2023 Daikin Applied, Minneapolis, MN. All rights reserved throughout the world. This document contains the most current product information as of this printing. Daikin Applied Americas Inc. has the right to change the information, design, and construction of the product represented within the document without prior notice. For the most up-to-date product information, please go to [www.DaikinApplied.com](http://www.DaikinApplied.com).

<sup>TM</sup> MicroTech, Rebel, Maverick II, Roofpak, Pathfinder, Trailblazer, Magnitude, Navigator, and Daikin Applied are trademarks or registered trademarks of Daikin Applied Americas Inc. The following are trademarks or registered trademarks of their respective companies: BACnet from American Society of Heating, Refrigeration and Air-Conditioning Engineers, Inc., and Windows from Microsoft Corporation

# Introduction

## General Information

This manual describes how to install and operate the remote user interface for use with MicroTech Applied Rooftops and also Air and Water-Cooled chiller unit controllers from Daikin Applied.

For technical support on rooftop or self-contained unit controllers, contact the Daikin Applied Air Technical Response Center at 844-521-3928 (techresponseaah@daikinapplied.com).

For chiller unit controller support, contact the Daikin Applied Chiller Technical Response Center at 540-248-9239 (techresponse@daikinapplied.com).

## Product Information

The remote user interface is designed for display, system configuration, set-up, and management of MicroTech unit controllers:

| MicroTech Unit Controller Models                  |  |
|---|--|
| Rebel® Packaged Rooftop                           | Models DPS and DPH                           |
| Rebel Packaged Rooftop                            | Models DPS and DPH, Refrigerant Only         |
| RoofPak® Applied Rooftop                          | Models RPE, RDE, RPS, RDT, RFS, RDS, and RAH |
| Self-Contained Systems                            | Models SWT and SWP                           |
| Maverick® II Commercial Rooftop                   | Model MPS                                    |
| Pathfinder® Air-Cooled Screw Chiller              | Models AWS and AWW                           |
| Trailblazer® Air-Cooled Scroll Compressor Chiller | Models AGZ-D and AGZ-E                       |
| Magnitude® Water-Cooled Chiller                   | Model WME, B Vintage                         |
| Navigator® Water-Cooled Screw Chiller             | Model WWV                                    |

In addition to the unit-mounted controller keypad/display, MicroTech unit control systems can be equipped with a remote user interface that handles up to eight units per interface. The remote user interface provides access to unit diagnostics and control adjustments similar to the unit-mounted controller.

## Features

- Push-and-roll navigation wheel with an 8-line by 30-character display format
- Operating conditions, system alarms, control parameters and schedules are monitored
- RS-485 or KNX interface for local or remote installation
- Power from controller, no additional power supply necessary
- Supports panel mounting and wall mounting

## Hazardous Information Messages

### DANGER

Danger indicates a hazardous situation, which will result in death or serious injury if not avoided.



### WARNING

Warning indicates a potentially hazardous situations, which can result in property damage, personal injury, or death if not avoided.



### CAUTION

Caution indicates a potentially hazardous situations, which can result in minor injury or equipment damage if not avoided.

### NOTICE

Notice indicates practices not related to physical injury.

## Reference Documents

| Number    | Company        | Title   | Source   |
|-----------|----------------|---|--|
| IOM 1202  | Daikin Applied | Pathfinder Chiller Model AWS Installation, Operation, and Maintenance Manual  | <a href="http://www.DaikinApplied.com">www.DaikinApplied.com</a> |
| IOM 1206  | Daikin Applied | Trailblazer Chiller Model AGZ Installation, Operation and Maintenance Manual  |  |
| IOM 1242  | Daikin Applied | Pathfinder Model AWW Chiller Installation, Operation, and Maintenance Manual  |  |
| IOMM 1033 | Daikin Applied | Magnitude Model WME, B vintage Magnetic Bearing Centrifugal Chiller Installation, Operation, and Maintenance Manual |  |
| IOM 1264  | Daikin Applied | Navigator Model WWV Water-cooled Chiller Installation, Operation, and Maintenance Manual                            |  |
| OM 920    | Daikin Applied | MicroTech unit controller for Commercial Rooftop, Applied Rooftop, and Self-Contained Systems Operations Manual     |  |

## Component Data

### General

Figure 1 shows the details of the remote user interface hardware design.

The overall physical layout includes:

- 5.7 × 3.8 × 1 in (144 × 96 × 26 mm) size
- 9.1 oz (256.7 g) weight, excluding packaging
- Plastic housing

### Power

- Supplied by the MicroTech unit controller for direct connection
- Separate 24V DAC power supply, optional for daisy chain connections, Max 85 mA

**NOTE:** Contact either the Daikin Applied Air Technical Response Center at 844-521-3928 (techresponseaah@daikinapplied.com) or the Chiller Technical Response Center at 540-248-9239 (techresponse@daikinapplied.com) if a separate power supply is desired.

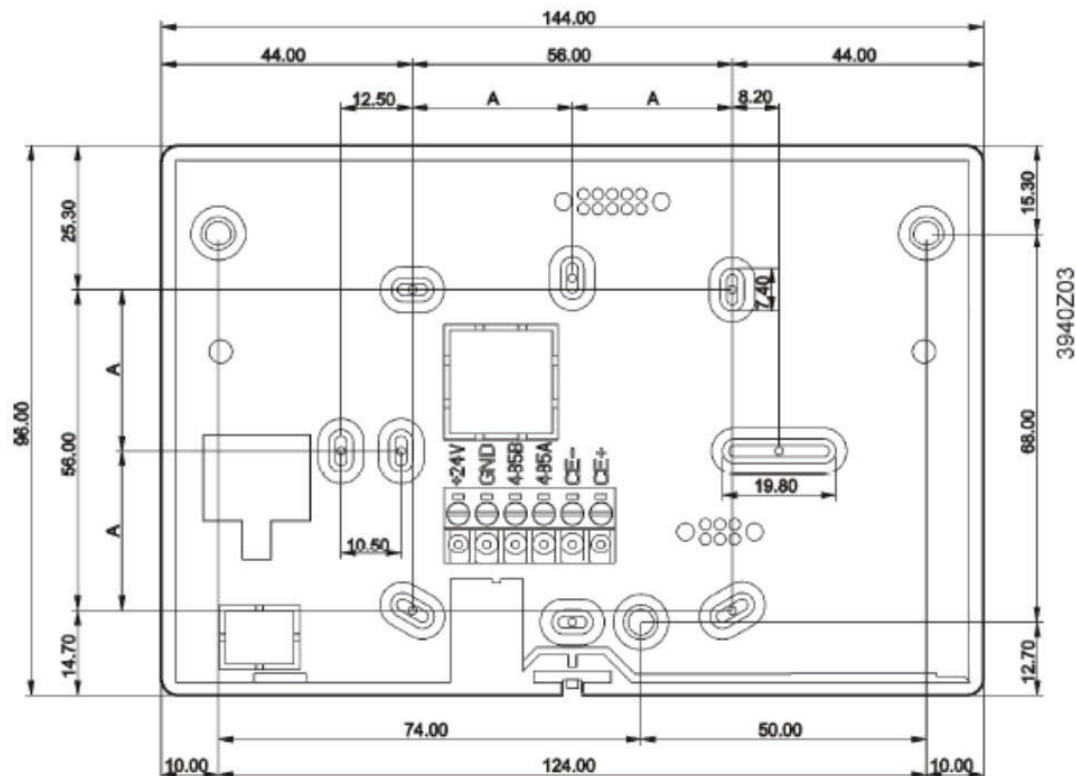
### Display

- LCD type FSTN
- Resolution dot-matrix 96 x 208
- Backlight blue or white, user selectable

### Environmental Conditions

|                         |   |
|-------------------------|---|
| Operation               | EC 721-3-3  |
| Temperature             | -40...158°F (-40...+70°C)   |
| Restriction LCD         | -4...140°F (-20...+60°C)  |
| Restriction Process-Bus | -13...158°F (-25...+70°C)   |
| Humidity                | < 90% RH (no condensation)  |
| Air pressure            | Min. 10.2 psi (700 hPa),<br>corresponding to max. 9843 ft<br>(3000 m) above sea level |

Figure 1: Physical Dimensions



# Installation

## Pre-Installation

Please be aware of the following before mounting and installing the remote user interface.

## Location Considerations

Placement of the remote user interface is necessary to ensure proper operation. When selecting a location, avoid the following:

- Locations that are outside the operating temperature and humidity range (see [Environmental Conditions](#).)
- Mounting on rooftop without a careful site evaluation and confirmation
- Walls that are subject to high vibration
- Areas with high humidity exterior walls and other walls that have a temperature differential between the two sides
- Areas that are close to heat sources such as sunlight, appliances, concealed pipes, chimneys, or other heat-generating equipment

## Mounting Surfaces

For surface installation, mount the remote user interface to a flat surface such as sheet rock or plaster, control panel, or an electrical junction box.

- If mounting onto sheet rock or plaster, use anchors, if necessary
- For mounting in the unit controller panel, electrical junction box, or other metal enclosure, use the supplied magnets.

## Parts

| Description                                  | Part Number              |
|--|--------------------------|
| MicroTech Remote User Interface              | 193408003 <sup>1,2</sup> |
| Connectors (using CE+ CE- connection option) | 193410302                |

1. Note that part number 193408001 is no longer available.

2. For daisy-chaining unit controllers together, a 2-pin connector (PN 193410302), is required *for each unit controller*. The 2-pin connector is not required for direct-connecting unit controllers.

To find your local parts office, visit [www.DaikinApplied.com](http://www.DaikinApplied.com) or call 800-37PARTS (800-377-2787).

# Mounting and Connecting

The following section describes how to mount the remote user interface and connect it to one or more MicroTech unit controllers.

### CAUTION

Electrostatic discharge hazard. Can cause equipment damage.

This equipment contains sensitive electronic components that may be damaged by electrostatic discharge from your hands. Before you handle a communication module, you need to touch a grounded object, such as the metal enclosure, in order to discharge the electrostatic potential from your body.

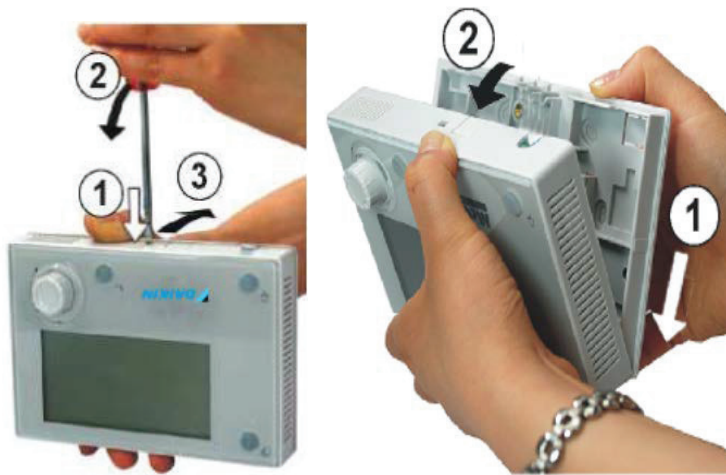
### WARNING

Electric shock hazard. Can cause personal injury or equipment damage.

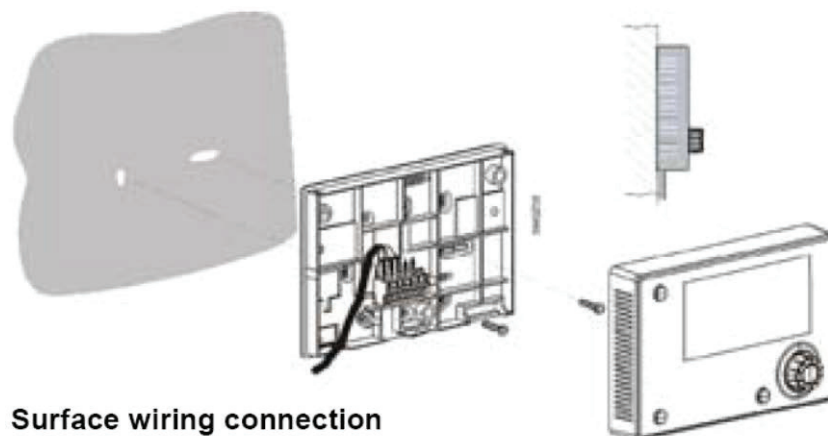
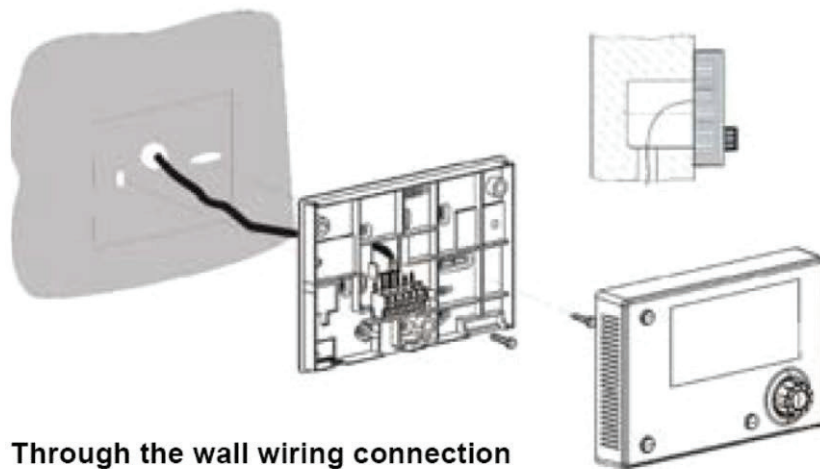
This equipment must be properly grounded. Only personnel knowledgeable in the operation of the equipment being controlled must perform connections and service to the unit controller.

1. Remove plastic cover ([Figure 2](#)).
2. Mount the remote user interface. The remote user interface can be either panel mounted or wall mounted as shown in [Figure 3](#). See [Figure 4](#) and [Figure 5](#) for terminal connections for each of the mounting locations.

*Figure 2: Removing the Cover of remote user interface*



*Figure 3: Wall and Surface Wiring Connections*





## Wiring the Remote User Interface

Wiring the remote user interface to the MicroTech unit controller can be done in two different ways:

1. Daisy-chain connection to as many as eight units.
2. Direct connection to a single unit controller.

Connection and wiring instructions in each case are described in the following section. See [Table 1](#) for wire sizing and distance limitations.

**NOTE:** Power is supplied by the MicroTech unit controller. If a separate 24V power supply is desired, please contact either the Daikin Applied Air Technical Response Center at 844-521-3928 (techresponseaah@daikinapplied.com) or the Chiller Technical Response Center at 540-248-9239 (techresponse@daikinapplied.com).

## Daisy-Chain Connection

Establish a physical connection from the remote user interface to the MicroTech unit controller.

1. Connect a twisted pair wire to the CE + and CE – pins of each unit controller and remote user interface (see [Figure 4](#) and [Figure 5](#)).
2. Daisy-chain up to eight MicroTech unit controllers to a single remote user interface. See [Figure 5](#) for wiring details. Note the wire size and distance limitations provided in [Table 1](#).
3. Cycle power to each MicroTech unit controller once the wiring of the remote user interface is complete.

**NOTE:** Downloading and communication using the daisy-chain connection may be slower than for the RJ45 (Ethernet) direct connection.

**Table 1: Wiring Specifications**

|                                       |   |
|---------------------------------------|---|
| Bus connection                        | CE+, CE-, not interchangeable   |
| Terminal                              | 2-screw connector   |
| Max. length                           | 1000 ft (305 m)   |
| Cable type                            |   |
| Wiring distance up to 500 ft          | Twisted pair, shielded cable 16 AWG   |
| Wiring distance between 500 - 1000 ft | Twisted pair, shielded cable 14 AWG   |
| Wiring distance over 1000 ft          | Not currently supported. Contact the appropriate Daikin Applied Technical Response Center for assistance. |

**Figure 4: Interface Details for Daisy-Chain Connection**

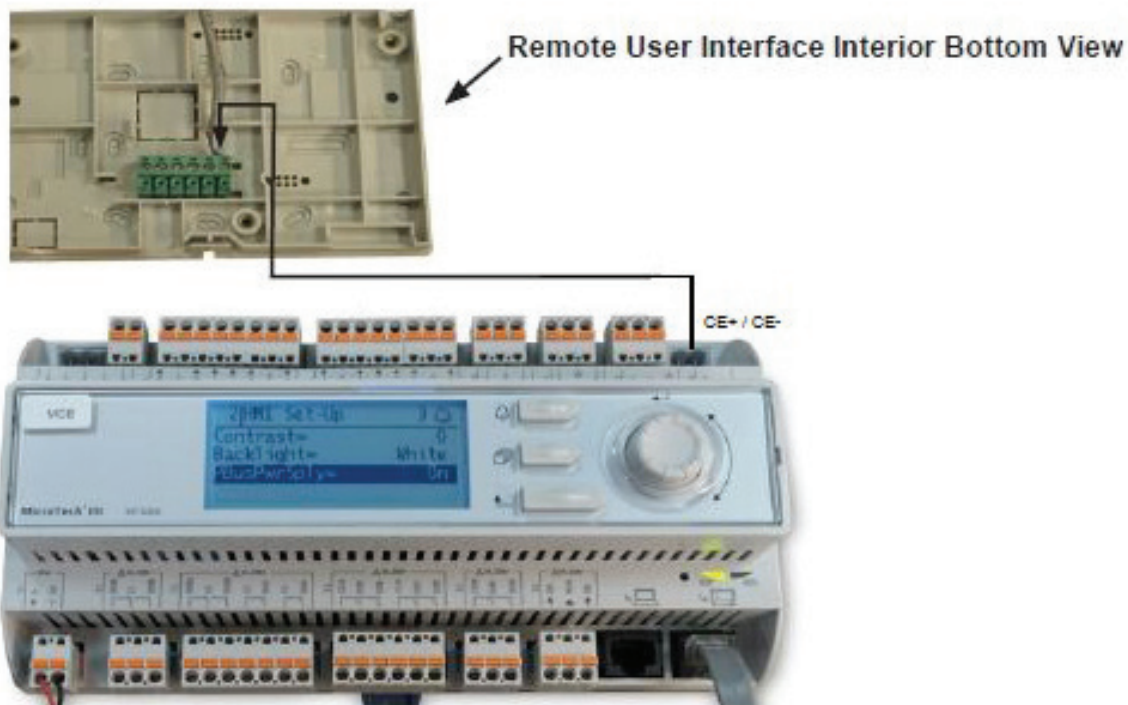
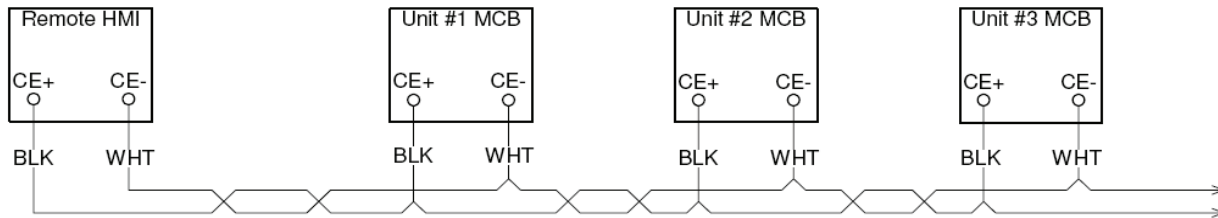


Figure 5: Daisy-Chain Connection Wiring Details



## Direct Connection

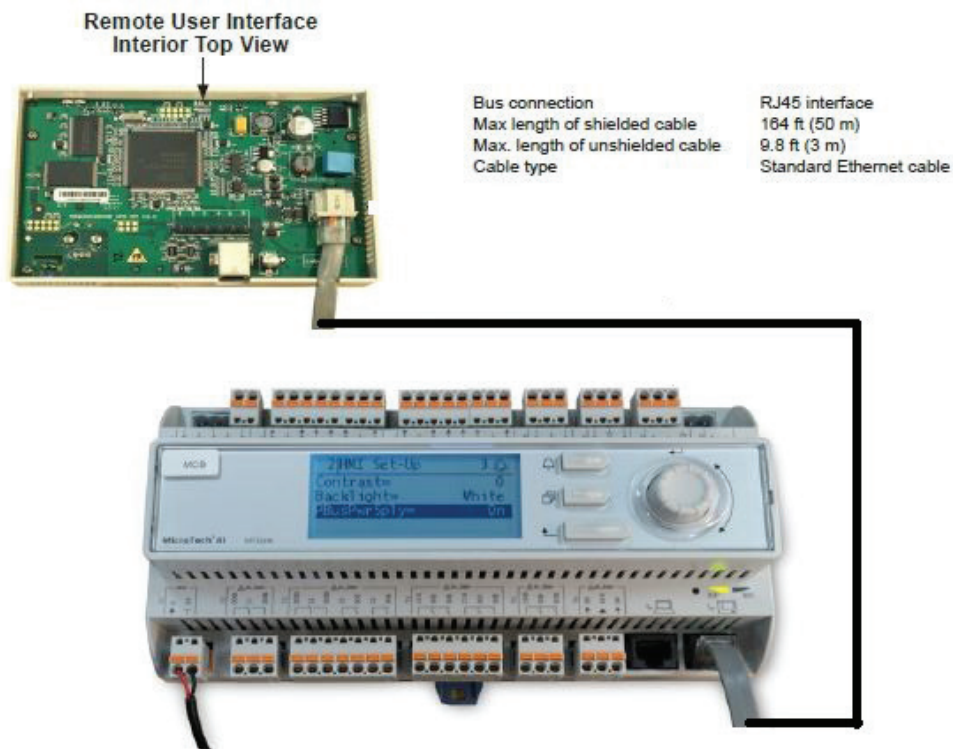
The remote user interface can be wired directly to a single MicroTech unit controller over a standard RJ45 (Ethernet) connection.

### Procedure

1. Locate the connector location as shown in [Figure 6](#)
2. Follow [Figure 6](#) for connection details. Note the distance limitations provided.
3. Cycle power to the unit(s) once the wiring of the remote user interface is complete.

**NOTE:** Power is supplied by the unit controller. If a separate 24V power supply is desired, please contact either the Daikin Applied Air Technical Response Center at 844-521-3928 (techresponseaah@daikinapplied.com) or the Chiller Technical Response Center at 540-248-9239 (techresponse@daikinapplied.com).

Figure 6: Interface Details for RJ45 Connector





# Operation

## Using the Remote User Interface

### Hardware Features

The remote user interface keypad/display consists of an 8-line by 30 character display, a “push and roll” navigation wheel, and three buttons: Alarm, Menu, and Back (Figure 7).

- Turn the navigation wheel clockwise (right) or counterclockwise (left) to navigate between lines on a screen and also to increase and decrease changeable values when editing. Press down on the wheel to use it as an Enter button.
- Press the Back button to display the previous page.
- Press the Home button to return to the main screen from the current page.
- Press the Alarm button to view the Alarm Lists menu.

### Keypad/Display Features

The first line on each page includes the page title and the line

number to which the cursor is currently “pointing.” The line numbers are X/Y to indicate line number X of a total of Y lines for that page. The left most position of the title line includes an “up” arrow to indicate there are pages “above” the currently displayed items, a “down” arrow to indicate there are pages “below” the currently displayed items or an “up/down” arrow to indicate there are pages “above and below” the currently displayed page. Each line on a page can contain status-only information or include changeable data fields. When a line contains status-only information and the cursor is on that line, all but the value field of that line is highlighted meaning the text is white with a black box around it. When the line contains a changeable value and the cursor is at that line, the entire line is highlighted.

Each line on a page may also be defined as a “jump” line, meaning pushing the navigation wheel will cause a “jump” to a new page. An arrow is displayed to the far right of the line to indicate it is a “jump” line and the entire line is highlighted when the cursor is on that line.

**NOTE:** Only menus and items that are applicable to the specific unit configuration are displayed.

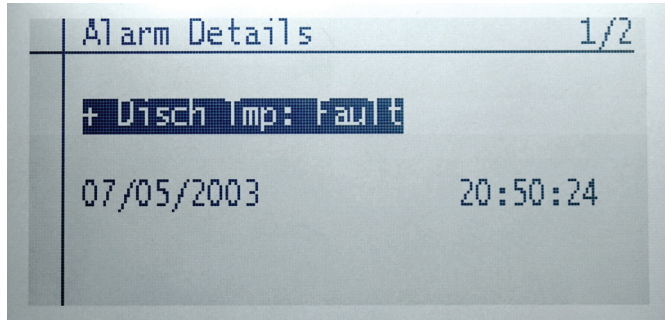
**Figure 7: Remote User Interface Main Features**



## Alarms

The Alarm Details Menu includes active alarm and alarm log information. See Figure 8 for an example of an active alarm. Also refer to the appropriate MicroTech unit controller Operation Manual ([www.DaikinApplied.com](http://www.DaikinApplied.com)) for available alarm options.

Figure 8: Alarm Details Menu



## Passwords

Unit controller menu functions have different levels of accessibility. The ability to view and/or change settings depends on the access level of the user and the password entered. There are four levels of password access:

1. No password.
2. Level 2. The highest level of access. Without entering a password, the user has access only to basic status menu items. Entering the Level 2 password (6363) allows similar access as Level 4 with the addition of the Unit Configuration Menu.
3. Level 4. Entering the Level 4 password (2526) allows similar access as Level 6 with the addition of the Commission Unit Menu, Manual Control, and Service Menu groups.
4. Level 6. Entering the Level 6 password (5321) allows access to the Alarm Lists Menu, Quick Menu, and the View/Set Unit Menus group.

**NOTE:** Alarms can be acknowledged without entering a password.

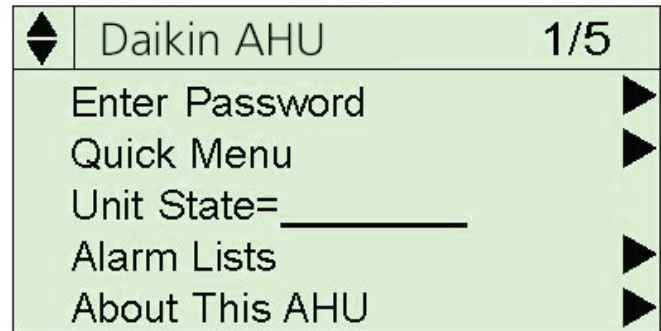
### Accessing The Password Page

The main password page is displayed when the remote user interface display (HMI) is first accessed.

1. Press the Home button.
2. Press the Back button multiple times, or if the keypad/display has been idle longer than the Password Timeout (default 10 minutes).

The main password page provides access to enter a password, access the Quick Menu, view the current Unit State, access the alarm lists or view information about the unit (Figure 9).

Figure 9: Main Password Page



The MicroTech unit controller Operation Manual ([www.DaikinApplied.com](http://www.DaikinApplied.com)) provides additional information about passwords, including how to use the Navigation and Edit Mode settings to access and modify passwords.

## Configuration

The following section describes how to set up the HMI so that it can be used to display, configure, or change unit parameters. Refer to the applicable MicroTech unit controller Operation Manual for a detailed description of chiller or rooftop sequence of operation and keypad menu structure when configuring the unit via the remote user interface ([www.DaikinApplied.com](http://www.DaikinApplied.com)).

**NOTE:** To toggle between units, press the Back button for five seconds to return to the main screen.

### Customize User Preferences

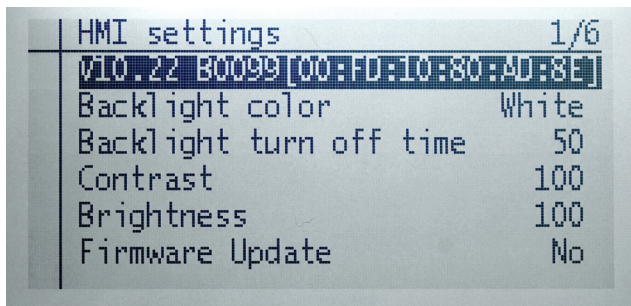
1. Turn power on to the unit controller(s). Power to the remote user interface is provided automatically from the MicroTech unit controller(s) through the RJ45 (Ethernet) direct connection.
2. The main screen with HMI Settings and Controller List appears (Figure 10).

Use the HMI Settings screen to change options for backlight color, backlight turn off time, contrast, and brightness.

**NOTE:** The main screen can be accessed at any time by pressing the Home button for five seconds.

3. Press the navigation wheel to select the HMI Settings menu, if desired.

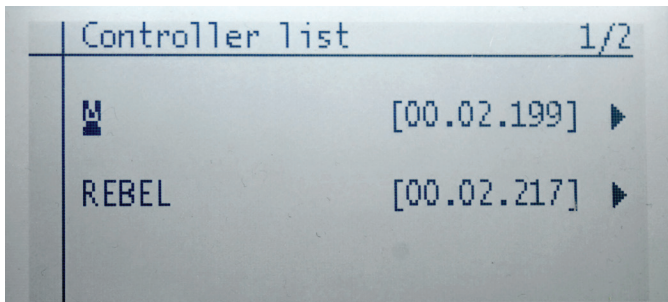
**Figure 10: Main Screen HMI Settings**



## Synchronize with MicroTech Unit Controller

1. Press the navigation wheel to select the Controller List screen (Figure 11).
  - The Controller List automatically updates each time the remote user interface is powered up so that information is synchronized from the main unit controller.
  - The Controller List screen displays the unit controller(s) connected to the remote user interface. This screen allows the user to select between units, if more than one unit is connected to the remote user interface

**Figure 11: Controller List Details**

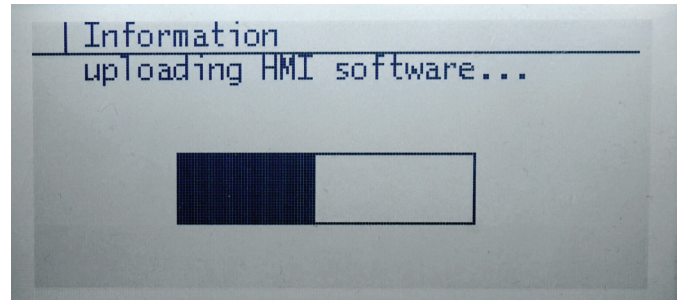


**NOTE:** A single unit appears on the screen as a selection possibility if only one unit controller is connected to the remote user interface.

2. Turn the navigation wheel clockwise and then press down to select the desired unit.
  - The Information screen appears as the remote user interface performs a download sequence to import the necessary information from the main unit controller. A status bar appears on the Downloading the Objects screen to indicate that the download is in process (Figure 12).

**NOTE:** Refer to the Troubleshooting section if the remote user interface appears to "freeze" during the initial downloading sequence.

**Figure 12: Information: Downloading Objects**



3. Once the first unit has been downloaded, select the next unit controller, if applicable. The download process is required for each unit controller connected to the remote user interface.
4. Press the Home button for five seconds to return to the main screen.

**NOTE:** The Downloading the Objects sequence generally takes a minute or less when direct-connecting to a single unit. However, the downloading sequence takes longer when using the daisy-chain connection. When the download sequence is complete, the Main screen of the unit controller appears on the remote user interface. At this point, the remote user interface and unit controller are synchronized.

5. Access and adjust the same parameters that are available via the unit controller keypad/display. Refer to the applicable MicroTech unit controller Operation Manual for the keypad menu structure and detailed description the unit controller sequence of operation ([www.DaikinApplied.com](http://www.DaikinApplied.com)).

## Firmware Upgrade Procedure

Follow these steps to update the remote user interface (HMI) firmware (.bin) file.

**NOTE:** The upgrade procedure requires the use of an SD memory card no larger than 8GB with a FAT32 file system format.

**NOTE:** A field update is not possible on units with v1.07 firmware. Contact the Daikin Applied Air Technical Response Center at 844-521-3928 (techresponseaah@daikinapplied.com) or the Chiller Technical Response Center at 540-248-9239 (techresponse@daikinapplied.com) for assistance.

### *Upgrading from VVS10 to a newer version*

1. Upload the firmware file, POL12289.bin, on the SD-Card in the root directory with no other files.
2. Insert the SD Card into the MicroTech unit controller. The unit controller must be powered-up and running.
3. Connect the HMI DM to the unit controller.
4. Press the back button of the HMI DM until the "HMI Setting and Local Connection" page appears.
  - a. Choose the HMI Setting. Scroll to the end of this page and the "Firmware Update" option appears.
  - b. Push and roll to YES. Push the knob of the HMI DM again.
5. The "Now Firmware Updating" message appears on the user HMI display.

Do not remove power from the unit controller.
6. After successful upgrade of the firmware, the HMI DM goes back to the normal HMI page.
7. Follow steps 1-4 to upgrade firmware for each HMI on a daisy-chain network. Please be aware that each remote user interface must use the same firmware version.



# Troubleshooting

This section contains helpful information, frequently asked questions, and other tips related to the remote user interface.

## Problem

During the initial download sequence, the keypad/display appears to freeze up and a "Loading.....Lost Connection" message appears.

## Solution

The remote user interface is stuck in the downloading sequence due to incompatibility with v1.07 application software. The remote user interface must be updated to v10.22 or newer application software. Contact Daikin Applied Air Technical Response at 844-521-3928 for further instructions.

## Problem

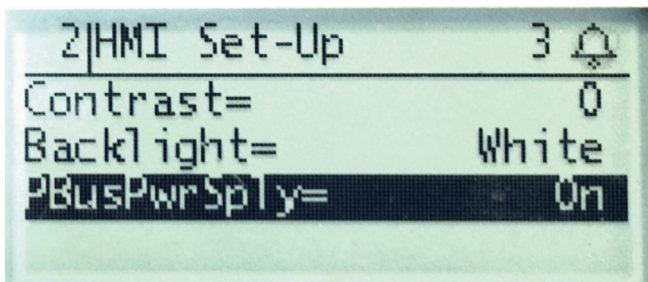
The remote user interface is experiencing a loss of communication.

## Solution

The site may have "dirty power" or electrical noise causing loss of communication.

1. Access the Power Bus menu on the MicroTech unit controller by the following keypad menu path: service menu/HMI setup/PBusPwrSply=ON (default). See [Figure 13](#).
2. Set the default Power Bus supply.
  - a. For the first and last units on the daisy-chain trunk, leave the Power Bus supply at the default of ON.
  - b. For all other units within the daisy chain trunk, set the Power Bus supply to the OFF position.

Figure 13: Power Bus Menu



## Problem

The remote user interface has been connected to the MicroTech unit controller but the display remains blank after power-up.

## Solution

Verify that the unit controller has power. Check wiring from the unit controller to the remote user interface.

**NOTE:** Inputs and outputs are polarity sensitive.

# Frequently Asked Questions

1. Is a separate 24V power supply necessary for direct connection?
  - No, power is provided by the MicroTech unit controller.
2. What type of cable is recommended for daisy-chain connection?
  - Daikin Applied generally recommends using twisted pair, 16 AWG shielded cable up to 500 ft and 14 AWG from 500 to 1000 ft. Contact the appropriate Technical Response Center for applications requiring longer distances.

How do I know if or when I need to upgrade the remote user interface (HMI) firmware files?

- If the remote user interface seems to freeze during initial download process
  - If wiring has been confirmed (inputs and outputs are polarity sensitive) and HMI is not responding
- See [Firmware Upgrade Procedure](#) section for details.

What if I want to upgrade the MicroTech unit controller firmware?

- Contact either the Daikin Applied Air Technical Response Center at 844-521-3928 (techresponseaah@daikinapplied.com) or the Chiller Technical Response Center at 540-248-9239 (techresponse@daikinapplied.com) for assistance.

# Helpful Tips

Service technicians often find it convenient to have two keypad/displays connected to a single unit controller. Using a split-screen setup makes it possible to view multiple menu items at the same time during start-up and also for diagnostic purposes.

- Simply hook up the first remote user interface with an RJ45 direct connection, and then use a two-wire twisted pair cable to connect to the second keypad/display.

## Revision History

| Revision  | Date           | Changes  |
|-----------|----------------|--|
| IM 1005   | January 2010   | Initial release  |
| IM 1005-1 | September 2010 | Added Daikin Trailblazer® chiller model AGZ-D  |
| IM 1005-2 | March 2012     | Added Rebel® packaged rooftop model DPS. Updated Figure 3 with labels and connector cables.  |
| IM 1005-3 | November 2016  | Added models AWV Pathfinder® chiller and AGZ-E Trailblazer® chiller, added RJ45 direct connection option, corrected bus wiring distance limitations, Troubleshooting section, Daikin branding and formatting updates |
| IM 1005-4 | January 2018   | Added WME & WWV chiller models.  |
| IM 1005-5 | August 2019    | Update connections   |
| IM 1005-6 | June 2023      | Branding and other formatting updates.   |







### ***Daikin Applied Training and Development***

Now that you have made an investment in modern, efficient Daikin Applied equipment, its care should be a high priority. For training information on all Daikin Applied HVAC products, please visit us at [www.DaikinApplied.com](http://www.DaikinApplied.com) and click on Training, or call 540-248-9646 and ask for the Training Department.

### ***Warranty***

All Daikin Applied equipment is sold pursuant to its standard terms and conditions of sale, including Limited Product Warranty. Consult your local Daikin Applied Representative for warranty details. To find your local Daikin Applied Representative, go to [www.DaikinApplied.com](http://www.DaikinApplied.com).

### ***Aftermarket Services***

To find your local parts office, visit [www.DaikinApplied.com](http://www.DaikinApplied.com) or call 800-37PARTS (800-377-2787). To find your local service office, visit [www.DaikinApplied.com](http://www.DaikinApplied.com) or call 800-432-1342.

This document contains the most current product information as of this printing. For the most up-to-date product information, please go to [www.DaikinApplied.com](http://www.DaikinApplied.com).

Products manufactured in an ISO Certified Facility.